

TECHNICAL SPECIFICATIONS

PP100 120 VAC Series 100W Portable Power Pack



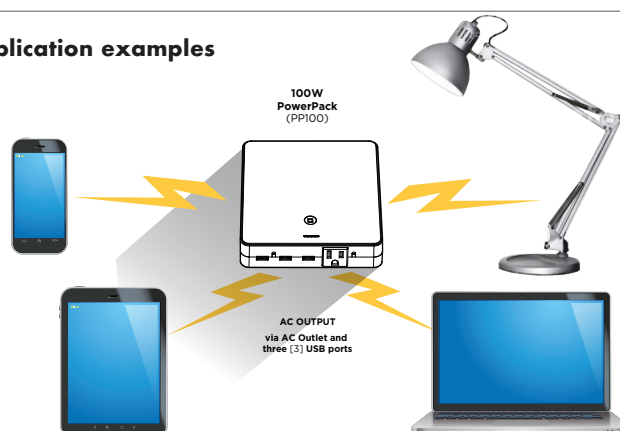
Product features

- 100W of portable household power.
- AC & USB power to run laptops & charge mobile devices.
- Li-ion battery technology with lightweight and high power capacity.
- Ideal for travellers, campers and emergencies.
- 3 x USB charging outlets, 1 x AC outlet.
- Auto-shutdown of USB when device is fully charged.
- Includes overload and thermal shutdown.

Product dimensions

Length: 6.4" x Width: 6.0" x Height: 1.4" (162.5 x 152.4 x 35.5mm)

Application examples



Available Sockets



USA / CAN

Specifications subject to change without notice.

PP100 120 VAC Series 100W Portable Power Pack

AC Output

Power (Continuous)	90W
Power (Peak)	100W
Power (Surge)	200W
Voltage/Frequency	120VAC / 60 Hz
Current (Nominal)	0.75A
Waveform	Modified Sinewave
Peak Efficiency	90%
AC Receptacle	NEMA 5-15R AC Receptacle

DC Output

5V USB Port 1	2.1A
5V USB Port 2	2.1A
5V USB Port 3	2.1A

DC Input Port (for internal battery charging)

Voltage (nominal)	15Vdc
Current	2A (maximum)

Internal Battery Capacity

Battery Type	Lithium-Polymer
Battery Capacity	90.7 Wh

Display/Indicator/Switch

LED for inveter & USB ports	Yes [Green, Blue]
LED for Battery Capacity	Gree LED (4 pc)
Indicator for Battery Charging	Yes
Unit On/Off	Momentary push button

Protection Features

Battery Undervoltage Warning	Yes (25% capacity)
AC Output Overload Protection	Yes
AC Output Short Circuit Protection	Yes
Over Temperature Protection	Yes

Accessories

Charging Cable	6" 18AWG [2.5mm round plug]
AC Adaptor (for unit charging):	
Charge Voltage	15.0 Vdc
Charging Current	1A
AC Input Voltage/Frequency	120/230VAC, 50/60Hz

Operating Temperature Range

Optimal Operating Temp. Range	0° to 40° C (32° to 104° F)
Storage Range	20° to 60° C (4° to 140° F)

Regulatory Compliance

Markings	cETLus
Conformance	UL 458 & CSA C22.2 No. 107.2-01 Standards
EMI/EMC	FCC Part 15 Class B

Available Output Sockets

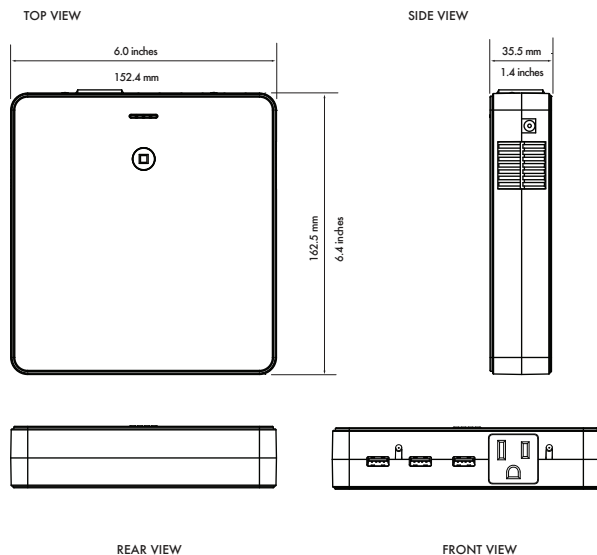


USA / CAN

Enclosure

Dimensions (L x W x H)	6.4" x Width: 6.0" x Height: 1.4" (162.5 x 152.4 x 35.5mm)
Net Weight	1.65 lbs. / 0.75 Kg

Schematic Drawings



Standard warranty

1 year warranty



This product carries a cETLus safety certification which complies with the Regulatory safety standards for North America.

All specifications subject to change without notice.
Copyright © 2024 Kisae Technology Inc. All Rights Reserved under UCC 1-308 without prejudice.

To learn more about this and other fine Kisae products please contact:
info@kisaetechnology.com

Distributor: